

## Elliptical Arch (Adjustable)

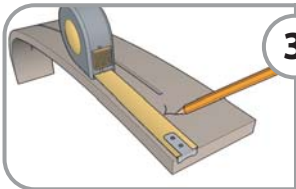
Tools needed: a. Nail Gun b. Circular Saw c. Tape Measure d. Square e. Level



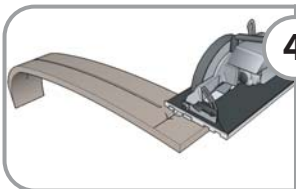
**1** Measure the width of your opening to the nearest quarter inch.



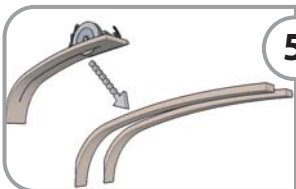
**2** Measure and mark the center of the header.



**3** Reference the "Finding Your Width" chart and locate the width of your opening in order to find the measurement needed to be cut off of each square cut half of the arch.



**4** Measure, mark and cut off the excess arch (square cut / 90° angle).



**5** For an opening deeper than a 2x6 wall, simply finish the "split cut" on each half and separate into 2 pieces. Install each piece, one on the front and one on the back of your opening (up to 2'-0" deep openings).



**6** Align each square cut half of the arch to the center mark on the stud. Using a nail gun (or screw gun), attach each half to the header. *Tip: if using screws predrill pilot holes.*



**7** Nail (or screw) each pre-cut mitered half into the stud. *Note: All pre-cut mitered halves need to drop (rise) down the same distance from the header.*



**8** That's it! Remember, you can use the arch as a template for cutting your drywall after it is installed. Depending on the width, some arches may require additional braces or blocks.

### Finding Your Width

Width of Opening	Cut-Off (Each Half)
69	3
69 1/4	2 7/8
69 1/2	2 3/4
69 3/4	2 5/8
70	2 1/2
70 1/4	2 3/8
70 1/2	2 1/4
70 3/4	2 1/8
71	2
71 1/4	1 7/8
71 1/2	1 3/4
71 3/4	1 5/8
72	1 1/2
72 1/4	1 3/8
72 1/2	1 1/4
72 3/4	1 1/8
73	1
73 1/4	7/8
73 1/2	3/4
73 3/4	5/8
74	1/2
74 1/4	3/8
74 1/2	1/4
74 3/4	1/8
75	0

**Video Demonstration?** Go to [www.ArchwaysMadeEasy.com](http://www.ArchwaysMadeEasy.com) and select the appropriate product that you've purchased. **Are nail guns OK?** Yes! In fact, we prefer you use nail guns (screw guns are OK as well).

Disclaimer: Standard safety precautions should be taken when installing Arch-Rite® arches. Installer should be familiar with safe operating procedures for power tools, wood working tools, and ANY ladders necessary for installation. The installer should follow published installation instructions and wear proper head and eye protection. Arch-Rite® and its Licensees assume no liability for any injury or accident as a result of installing any Arch-Rite® products. All Arch-Rite® products are designed to bear only the weight of drywall, drywall products, paint, trim and/or finishing items. **No Arch-Rite® products are designed to bear the weight and forces of other framing members.** All Arch-Rite® products are to be used for aesthetic purposes and are non load-bearing.

U.S. Patent Numbers 4,955,168; 5,459,974; 5,584,148; 5,649,393; 5,815,990; 6,128,864; 6,370,826 and other Patents Pending.